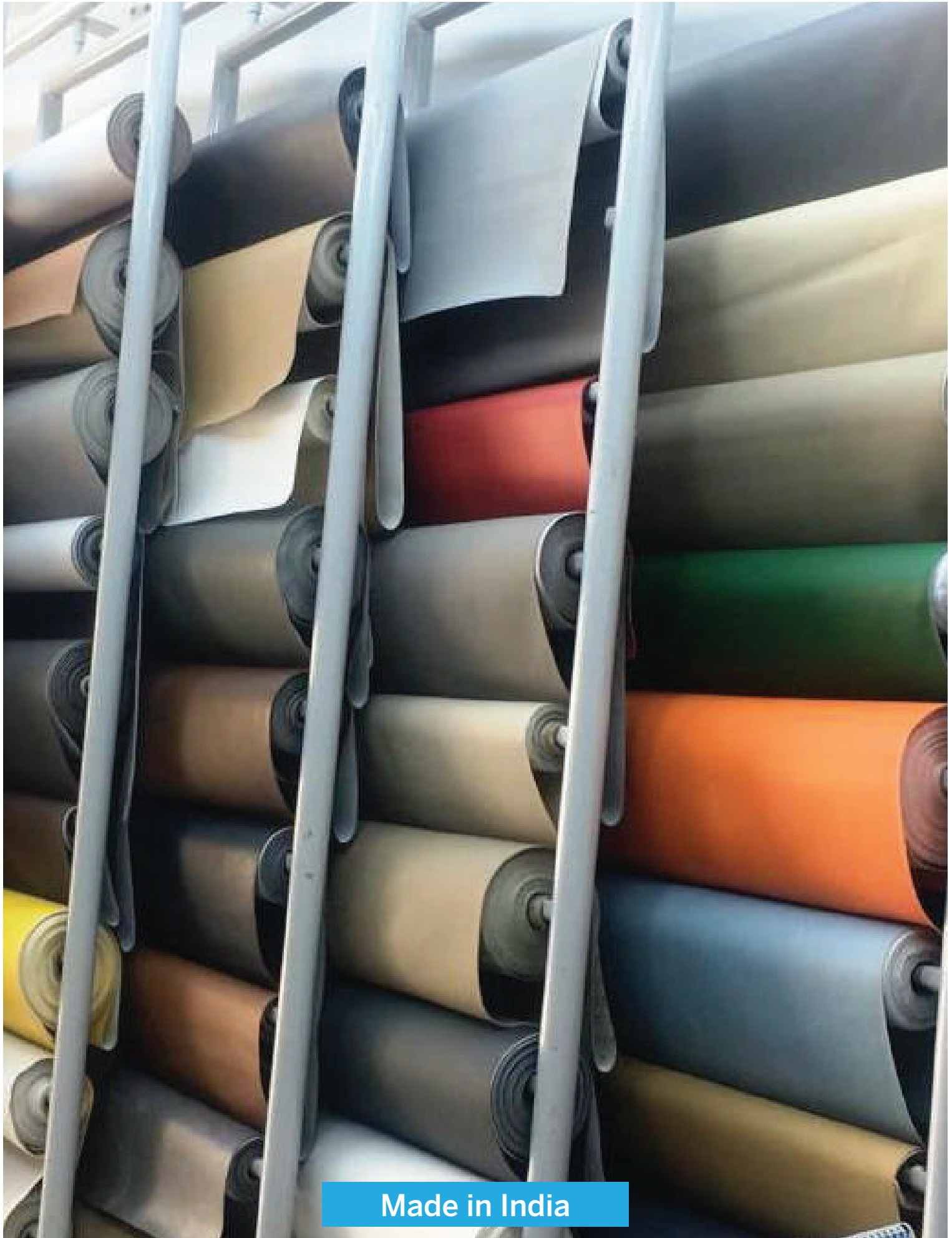


Artificial Leather Cloth



Made in India



RMG Polyvinyl is an ISO 9001:2015 system approved company and is one of the leading manufacturer and exporter of PVC Floor Coverings & Artificial Leather in India with annual production in excess of 40,000 MT of PVC products namely PVC floorings, PVC leather, PVC Films & Sheeting's, and PVC Geomembranes. Winner of Top Export award for PVC Floor coverings since several years. The products are exported to Asian countries, Europe, Gulf, Africa, and Americas.



RMG's state-of-the-art plant is located at Sikandrabad (UP) in the Delhi NCR region, the capital of India. The factory boasts of modern calendaring, LVT & Cushion Vinyl lines to deliver the widest range of flooring products and modern spread coating lines for PVC leather production. The facilities include machines for On-Line & Off-Line Printing, Vacuum Embossing, a comprehensive production unit of knitting hosiery fabrics, etc. A full-fledged lab is also within the factory to conduct Fire & Smoke tests, Abrasion & Martindale tests, Tensile & tear tests, Colour fastness & Colour matching tests, etc.

RMG's WONDERFAB is marketed in India & abroad under a wide network of dealers & distributors apart from direct marketing by the company with Bus & Train OEM customers for seat upholstery, healthcare & stationery segment. WONDERFAB PVC leather is used for upholstery of furniture, in boats & yachts, seat covers of automobiles & two wheelers, manufacturing of ladies' handbags & sports footwear, etc.



PVC LEATHER CLOTH

WONDERFAB: This PVC Coated fabrics, which is a faux leather, is used for upholstery in Seats of Cars, Two Wheelers, Buses, Trains, Yachts & boats, Chairs & Sofa and also for making car foot mats & hand bags, belts, shoe uppers, etc. Produced in a range of thicknesses from 0.70 mm to 1.20 mm for upholstery and fused with a wide variety of knitted & woven fabrics to meet specific needs of strength, elasticity & comfort, WONDERFAB is available in a spectrum of colours & shades with emboss patterns like leather grains, geometrical designs, etc.



FOUR TYPES OF BASIC QUALITIES ARE PRODUCED

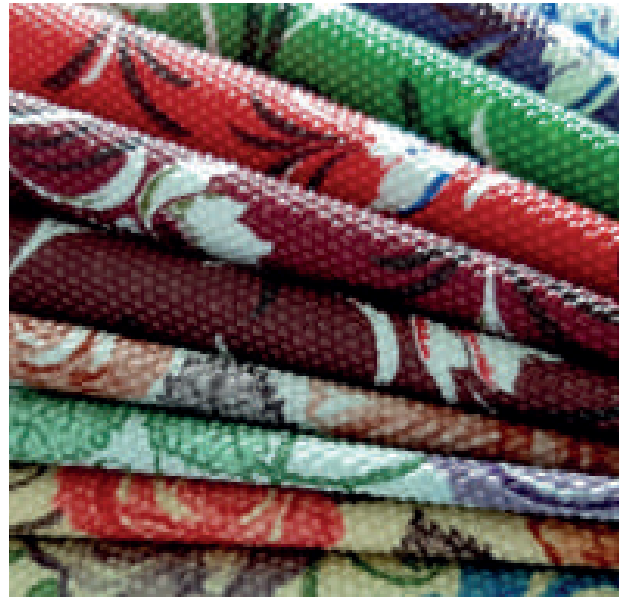
Spread Coated type

These are normally used for upholstery. Normally they are foamed leather which provide enhanced comfort. Compact variety is also produced which are used for heavy duty applications like upholstery for seats & berths for Indian Railways.



Vacuum Embossed type

These are like above but have a deep embossing and are slightly harder in feel. They are available in plain shades or printed varieties. Main uses are for handbags or for use in making automobile foot mats but can be used as a general-purpose PVC leather as well



Unsupported type

These are foamed PVC sheets with a top embossing but are without a textile backing. This enables it to be thermoformed and used in stationery industry or are specially used in automobile interiors, mainly for floors or foot mats. Since they are foamed, they are light weight and comfortable to use.



Calendared Type

These are compact type and are normally produced in low thickness. They are low priced items and suitable for use as Dastarkhans in houses and for seat covers of Auto Rickshaws & bicycles, etc.



PRODUCT RANGE OF WONDERFAB

For Upholstery of Automobiles & Furniture:



WONDERFAB includes a variety of PVC Upholstery leather suitable for covering the interiors of cars and various types of furniture. It is available in thin or thicker thickness and with arrange of hosiery backings to meet every need & budget.

Available thickness: 0.70 mm – 1.20 mm
Available roll width: 1370 mm – 1400 mm
Available roll length: 20 mtrs – 30 mtrs

Our Quality name

Higher Quality:

Supreme, CKMK, Platinum & German Etc.

Medium Quality:

Laurel, Lovender, Lotus Plus & Kitkat etc.

Commercial Range:

Lotus, Wonderfab, EDME & Turkey etc.



For Upholstery of Boats & Yachts



We produce an exclusive range of PVC leather suitable for Marine application. Since these fabrics are mainly used for upholstery or seats used in boats or yachts, they have specific properties like UV resistance, Fire retardant, Anti abrasion surface (up to 150000 cycles), Colour fastness and flexibility etc.

Available thickness: 1.0 mm – 1.20 mm
Available roll width: 1370 mm – 1400 mm
Available roll length: 20 mtrs – 30 mtrs

Our Quality name:

Caribe, Curacao, Tammy & Yante Marine Leather.



For Upholstery of Railway Seats & Berths and Passenger Buses:



We are the approved OEM vendors of Indian railways. Govt road transport corporations like RSRTC, GSRTC, UPSRTC & MSRTC Etc and bus manufacturers like Tata, Ashok Leyland, Swaraj Mazda, Mahindra & Eicher Etc wherein we supply them specialised quality PVC leather suitable for heavy duty use for passenger seats of buses and seat & berths for trains. Our transport leather products are Fire retardant, Anti abrasion surface (up to 500000 cycles), Durable and Heavy-duty.

Available thickness: 0.75 mm – 1.00 mm
Available roll width: 1370 mm – 1400 mm
Available roll length: 20 mtrs – 30 mtrs

Our Quality name:
CG-07, German, Euro, Awadh Etc.

For Seats of 2 wheelers Motorcycles & Scooters



We have a special range of PVC leather suitable for two-wheeler seat covers. These leathers are designed to meet OEM specifications of Hero, Honda, Bajaj & TVS, etc. Cheaper, after market qualities are also available. Our two-wheeler seat covers are Anti abrasion, Durable and Heavy-duty.

Available thickness: 0.80 mm – 1.80 mm
Available roll width: 1370 mm – 1400 mm
Available roll length: 20 mtrs – 30 mtrs

Our Quality name:
Hero Honda, Kewra MK, Automat, Jasmin, Mogra, Century & Rose Plus Etc.

Use as Mattress Covers in Hospitals



Recently we introduced PVC leather suitable in Healthcare applications for making mattress covers used in hospitals & healthcare segment wherein special anti-microbial additives are added to prevent spread of infection & clean room conditions. These leathers are specially meant to cover Hospital beds, Surgery Tables, Hospital Furnitures etc.

Available thickness: 0.70 mm – 1.00 mm
Available roll width: 1370 mm – 1400 mm
Available roll length: 20 mtrs – 30 mtrs

Our Quality name:
M-Hibiscus, M-Bluebell & M-Zinnia Etc.



For Industrial & Technical uses



PVC conductive leather is also produced which are used on chairs & tables used in electronic manufacturing factories. X-Ray barrier leather cloth is also produced for X-ray aprons used by technicians in healthcare industry.

Available thickness: 0.70 mm – 1.00 mm
Available roll width: 1370 mm – 1400 mm
Available roll length: 20 mtrs – 30 mtrs

Our Quality name:
C-Cobra, X-Cobra, Etc.

For use in making handbags



Wonderfab has large variety of PVC Leather with attractive colours, embossing designs and feel suitable for making ladies handbags. Normally they are produced with Vaccum Embossings.

Available thickness: 0.70 mm – 1.00 mm
Available roll width: 1370 mm – 1400 mm
Available roll length: 20 mtrs – 30 mtrs

Our Quality name:
V-Cobra Etc.

For use in making car foot mats



Wonderfab produces a range of embossing & designs in 2.0 mm thickness which are suitable to make car or Automobile foot mats. These products can be made FR Rated (Fire resistance) as well. Product has a strong loop knitted back fabric back to provide durable for heavy-duty applications. Unsupported type is also available suitable for thermoforming.

Available thickness: 2.00 mm
Available roll width: 1370 mm – 1400 mm
Available roll length: 20 mtrs – 30 mtrs

Our Quality name:
Foot Mat Etc.



For use in the Footwear Industry



Wonderfab produces top class leather products suitable for belts, shoes, handbags, and purses. These products are designed considering your various needs with a wide variety of finish and shades.

It's easy to clean, scratch resistant and long lasting, what any footwear should be.

Salient Features

- Ease of Stitching
- Durable

Available thickness: 0.70 mm - 3.00 mm
Available roll width: 1370 mm – 1400 mm
Available roll length: 20 mtrs – 30 mtrs

Our Quality name:

Belt, Shoe Upper, Shoe Insole, Shoe Lining Etc.

For use in stationery industry (Unsupported type)



Our stationary leather range has a suede look and leather like feel on its top surface. It is without fabric backing and can be laminated on cardboard paper etc.

Stationary leather is suitable for making stamping etc.

Available thickness: 0.60 mm – 1.50 mm
Available roll width: 1370 mm – 1400 mm
Available roll length: 20 mtrs – 30 mtrs

Our Quality name:

Nubuk, Stationary Leather Etc.

For use in Auto Rickshaws & Bi-Cycle seats



We also produce a special quality of calendered PVC leather suitable for Auto rickshaw and bi-cycle seats. These products have a bright printed top surface with excellent scratch & wear resistance.

Available thickness: 0.60 mm – 0.75 mm
Available roll width: 1370 mm – 1400 mm
Available roll length: 20 mtrs – 30 mtrs

Our Quality name:

0.35 mm Calendered Leather, Sparklite, Sparkle, Grey Base, White base, Etc.



ISO 9001:2015
www.tuv.com
ID 910867206



AVAILABLE WONDERFAB LEATHER COLOUR OPTIONS

40+ beautiful options, a colour to suit your every mood We can also customize any colour of your choice.



WF-LC-C-01



WF-LC-C-02



WF-LC-C-03



WF-LC-C-04



WF-LC-C-05



WF-LC-C-06



WF-LC-C-07



WF-LC-C-08



WF-LC-C-09



WF-LC-C-10



WF-LC-C-11



WF-LC-C-12



WF-LC-C-13



WF-LC-C-14



WF-LC-C-15



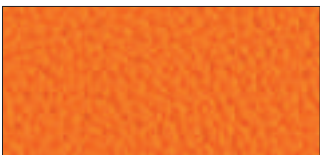
WF-LC-C-16



WF-LC-C-17



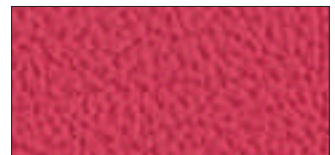
WF-LC-C-18



WF-LC-C-19



WF-LC-C-20



WF-LC-C-21

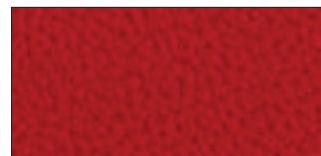




WF-LC-C-22



WF-LC-C-23



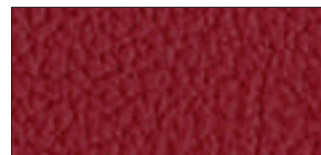
WF-LC-C-24



WF-LC-C-25



WF-LC-C-26



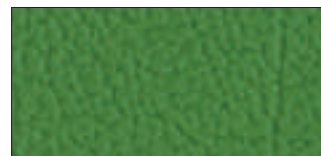
WF-LC-C-27



WF-LC-C-28



WF-LC-C-29



WF-LC-C-30



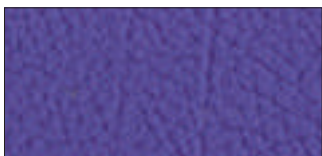
WF-LC-C-31



WF-LC-C-32



WF-LC-C-33



WF-LC-C-34



WF-LC-C-35



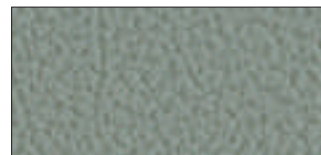
WF-LC-C-36



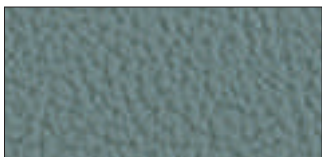
WF-LC-C-37



WF-LC-C-38



WF-LC-C-39



WF-LC-C-40



WF-LC-C-41



WF-LC-C-42



WF-LC-C-43

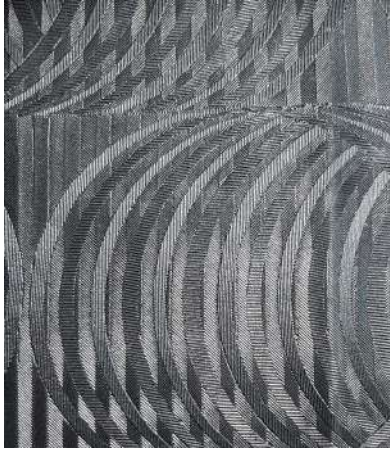


WF-LC-C-44

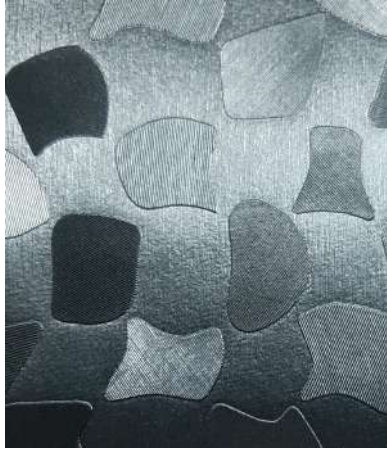


WONDERFAB LEATHER EMBOSSING DESIGNS

40+ emboss finishes, Smooth to Textured, a wide variety of choice. Any of our available embosses can be applied to any specification of PVC Leather.



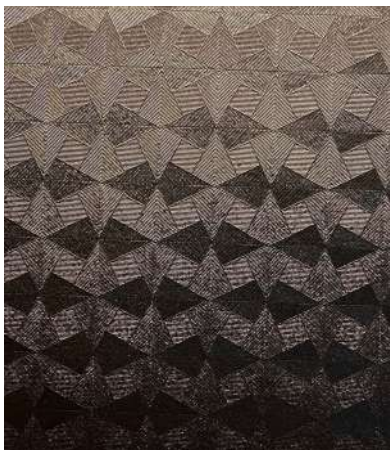
RME - 01



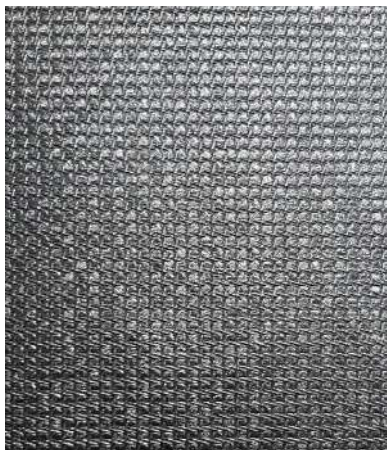
RME - 06



RME - 11



RME - 12



RME - 14



RME - 23



RME - 103



RME - 132



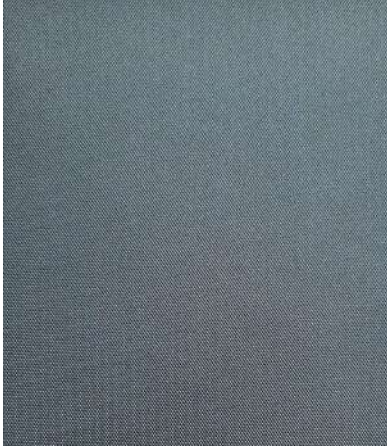
RME - 147



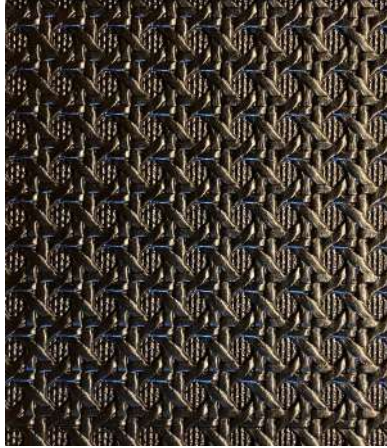
ISO 9001:2015
www.sivco.com
ID 910867206



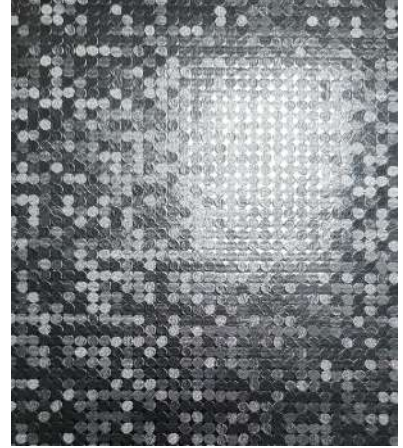
EMBOSSING DESIGNS



RME - 173



RME - 177



RME - 243



RME - 401



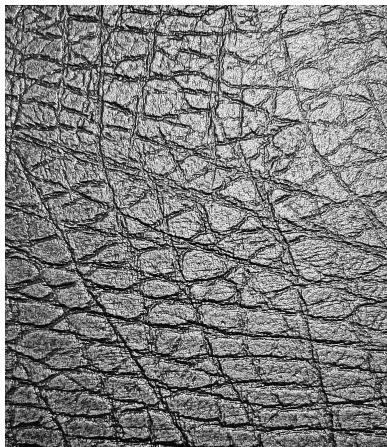
RME - 402



RME - 406



RME - 409



RME - 411



RME - 412



ISO 9001:2015
www.tuv.com
ID 910867206



EMBOSSING DESIGNS



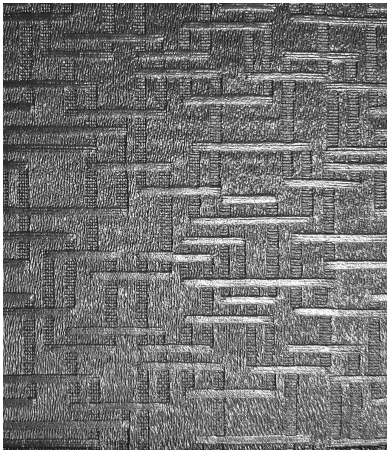
RME - 413



RME - 415



RME - 418



RME - 420



RME - 425



RME - 429



RME - 433

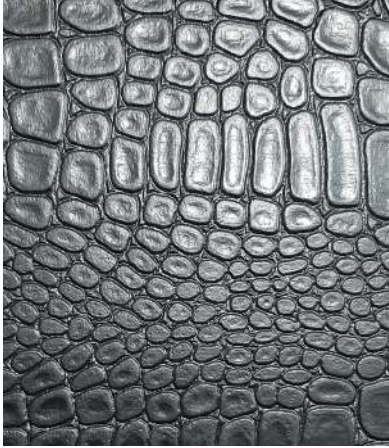


RME - 435

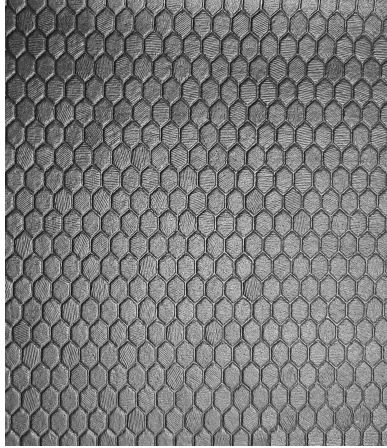


RME - 436

EMBOSSING DESIGNS



RME - 441



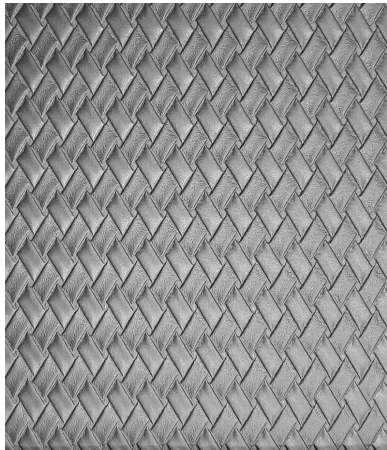
RME - 445



RME - 446



RME - 447



RME - 453



RME - 457



RME - 459



RME - 464



RME - 470



ISO 9001:2015
www.tuv.com
ID 9108637206



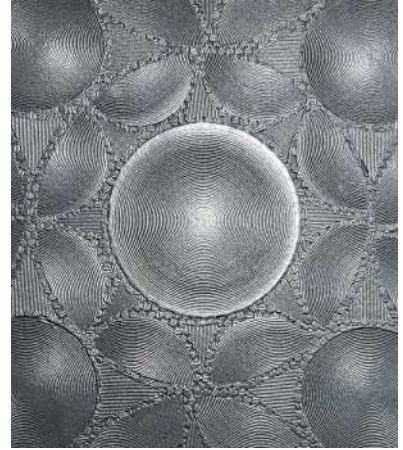
EMBOSSING DESIGNS



RME - 471



RME - 479



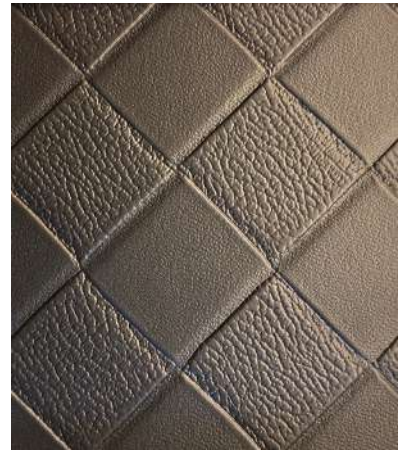
RME - 481



RME - 483



RME - 484



RME - 485



RME - 489



RME - 490



RME - 492



ISO 9001:2015
www.tuv.com
ID 910867206



EMBOSSING DESIGNS



RME - 497



RME - 521



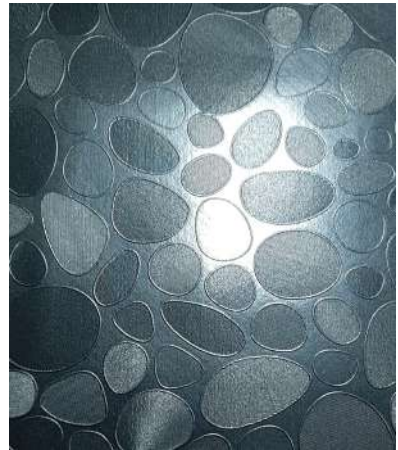
RME - 527



RME - 603



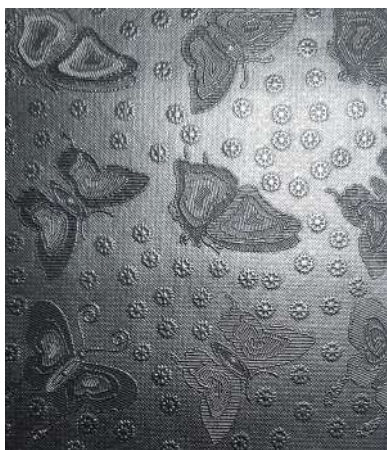
RME - 604



RME - BATASHA



RME - BRISTLE



RME - BUTTERFLY



RME - CEDRO



EMBOSSING DESIGNS



RME - EP 25



RME - 470



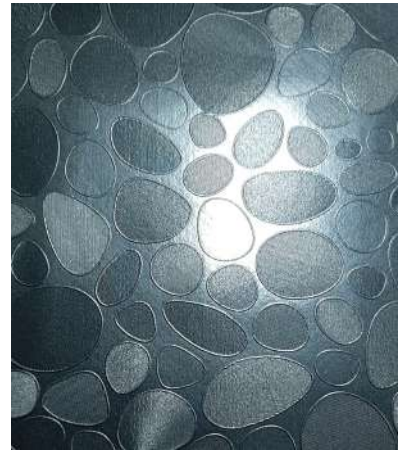
RME - 471



RME - 479



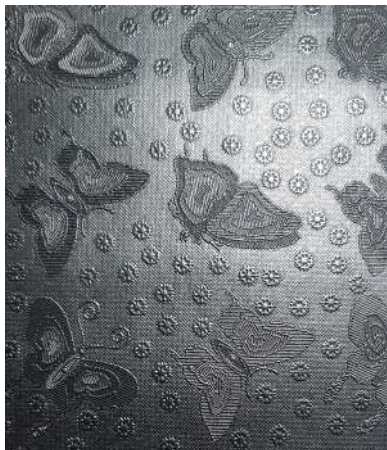
RME - 481



RME - GERMAN



RME - HOCKENHEIM



RME - M 48



RME - M - 53



ISO 9001:2015
www.tuv.com
ID 910837206



EMBOSSING DESIGNS



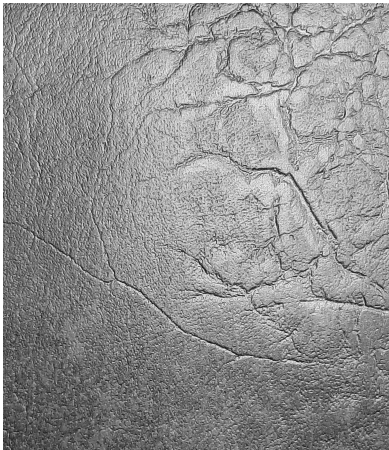
RME - M - 90



RME - NIMBUS



RME - ROYALEE



RME - 476

WONDERFAB LEATHER VACUUM EMBOSSING DESIGNS

Vacuum embossing design



RMVE - V 01



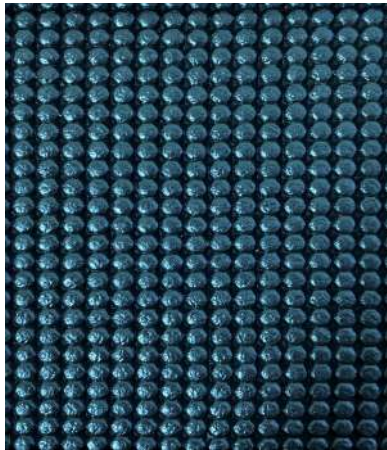
RMVE - V 02



RMVE - V 03



RMVE - V 04



RMVE - V 05



RMVE - V 06



RMVE - V 07



RMVE - V 08



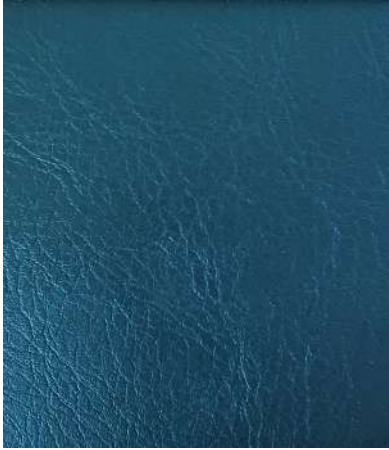
RMVE - V 09



ISO 9001:2015
www.wonderfloor.com
ID: 910867206



VACUUM EMBOSSING DESIGNS



RMVE - V 10



RMVE - V 11



RMVE - V 12



RMVE - V 13

FABRIC OPTIONS



CKMK Fabric



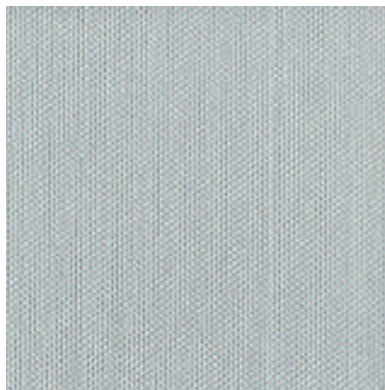
Fleece Fabric



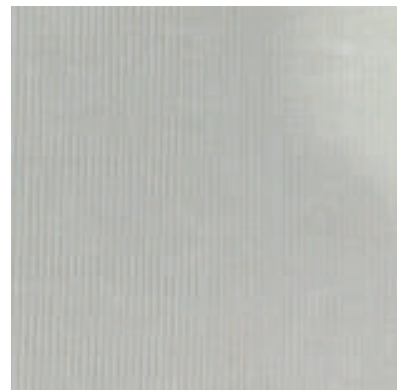
Loop Knitted Fabric



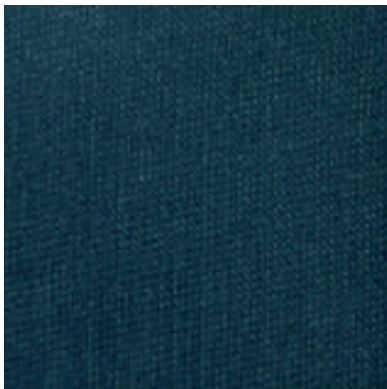
Matty Fabric



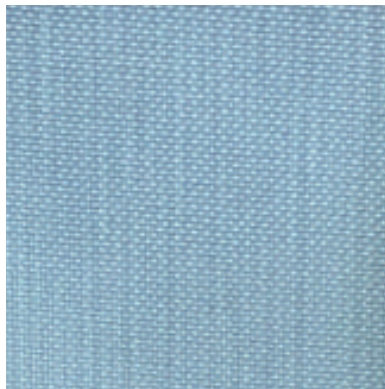
Polyester Fabric



PV Hosiery



Satin Fabric



Tarpaulin Fabric



Thick Raised Fabric

AVAILABLE PRODUCT THICKNESS

Various thicknesses, a wide range to ensure a solution for your degree of wear and tear. 0.65 mm, 0.70 mm, 0.75 mm, 0.80 mm, 0.90 mm, 1.00 mm, 1.20 mm, 1.50 mm, 1.80 mm & 2.00 mm etc.

AVAILABLE TOP SURFACE FINISH

Understated or bold, we can cater to your style with 5 finishes that give the final touch of quality. Any combination of emboss and colour can be applied to desired finish

Glossy Surface Finish



Semi-Glossy Surface Finish



Semi Mat Finish



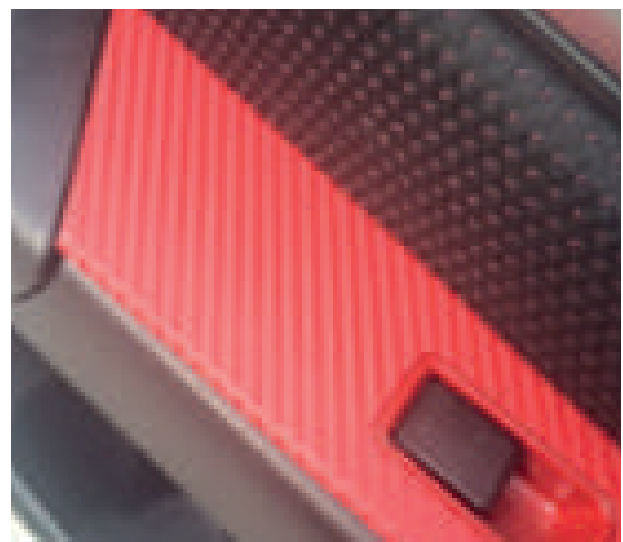
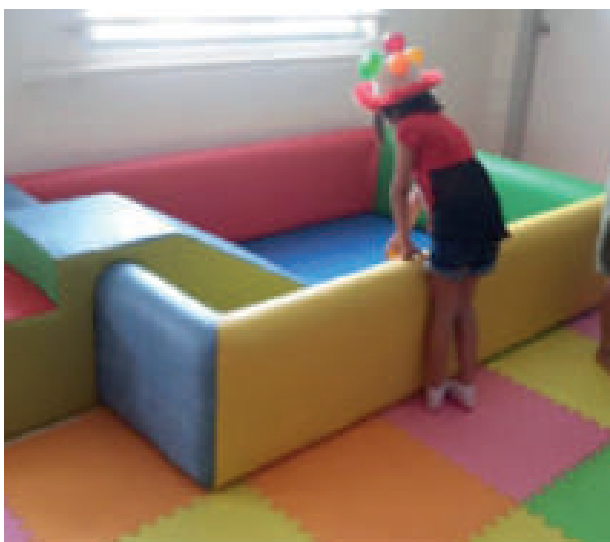
Mat Surface Finish



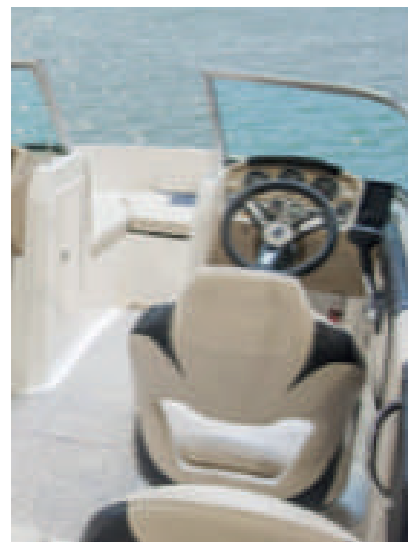
Two tone (Printed) Leather Finish



PVC LEATHER AT VARIOUS PRODUCT APPLICATIONS



PVC LEATHER AT VARIOUS PRODUCT APPLICATIONS



**For technical details:
email: info@rmgpoly.com
Call: +91 9873138885**

**Visit us at,
www.wonderfloor.co.in
www.rmgpoly.com**

RMG POLYVINYL INDIA LIMITED

Registered Office : UGSR 4, Ansals Plaza, Sector 1, Vaishali Ghaziabad 201 010, (U.P) INDIA. Tel.: +91 120-4284802/803/804/805/806.

Fax: +91 11 66173679. E-mail: info@rmgpoly.com

Regional Offices :

• Ahmedabad • Bangalore • Bhubaneswar • Chennai • Chandigarh • Guwahati • Hyderabad • Indore • Kolkata • Kochi
• Lucknow • Mumbai • Pune • Patna

WONDERFLOOR is the registered Trade Mark of RMG Polyvinyl India Limited www.wonderfloor.com

